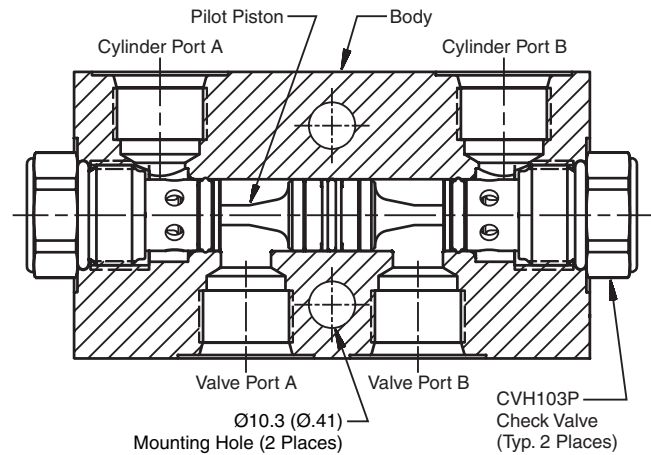


General Description

Pilot Piston Style Dual Pilot Operated Check Valve.
 For additional information see Technical Tips on pages CV2-CV3.

Features

- Spherical poppet for low leakage
- “D” -Ring eliminates back-up rings
- Optional sealed pilot piston

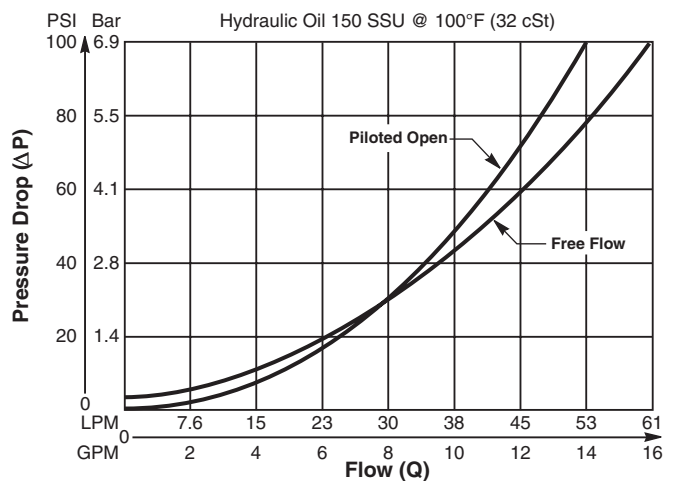


Specifications

Maximum Flow	60 LPM (16 GPM)
Maximum Inlet Pressure	350 Bar (5000 PSI) - CDPH103
Leakage Across Check 150 SSU (32 cSt)	2 drops/min. (0.13 cc/min.)
Leakage Across Pilot Piston (No Seals)	312 cc/min. 0.3 LPM (.08 GPM)
Pilot Ratio	4:1
Pilot Piston Part Numbers	No Seal - 717917 Nitrile Seal - 717917N Fluorocarbon Seal - 717917V
Cartridge Material	All parts steel. All operating parts hardened steel.
Body Material	Steel - CDPH103
Operating Temp. Range (Ambient)	-45°C to +132°C (“D”-Ring) (-50°F to +270°F) -34°C to +121°C (Nitrile) (-30°F to +250°F) -26°C to +204°C (Fluorocarbon) (-15°F to +400°F)
Fluid Compatibility/Viscosity	Mineral-based or synthetic with lubricating properties at viscosities of 45 to 2000 SSU (6 to 420 cSt)
Filtration	ISO-4406 18/16/13, SAE Class 4
Approx. Weight	1.59 kg (3.5 lbs.)

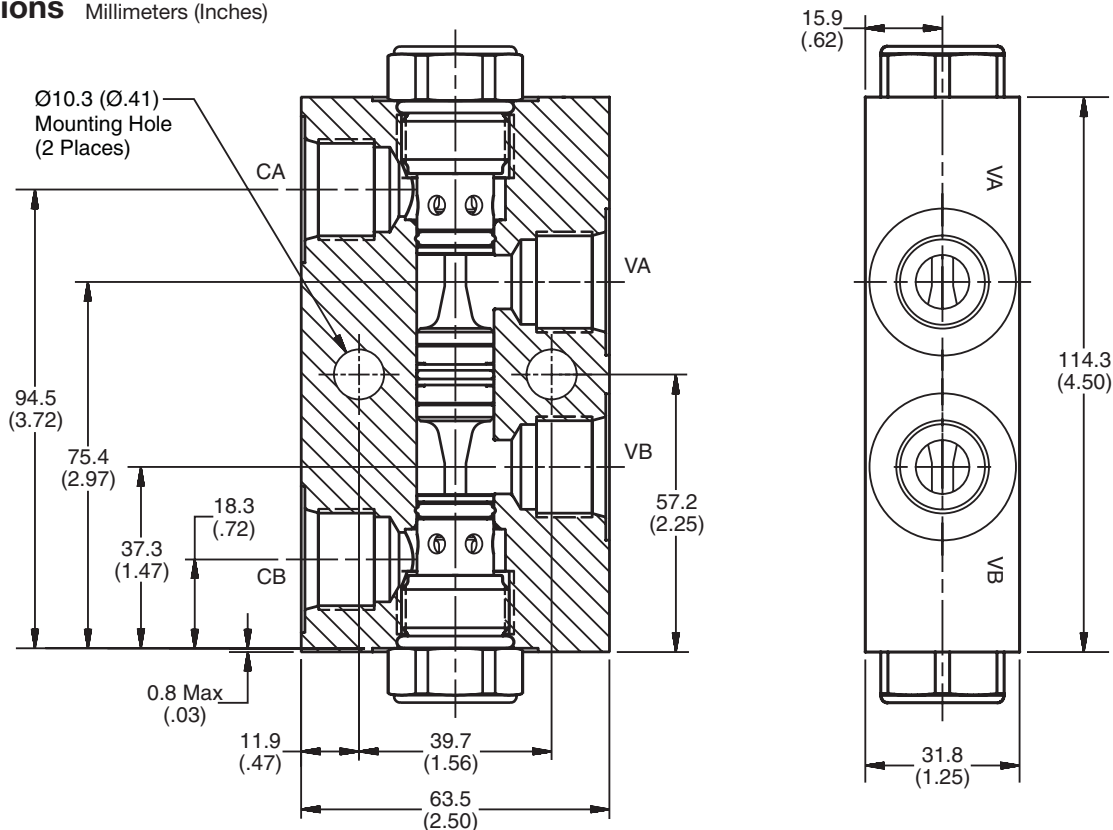
Performance Curve

Pressure Drop vs. Flow (Through cartridge only)



CV Check Valves
SH Shuttle Valves
LM Load/Motor Controls
FC Flow Controls
PC Pressure Controls
LE Logic Elements
DC Directional Controls
SV Solenoid Valves
PV Proportional Valves
CE Coils & Electronics
BC Bodies & Cavities
TD Technical Data

Dimensions Millimeters (Inches)



Ordering Information

CDP	H103			8T
10 Size Dual Pilot Piston P.O. Check Valve	Model Desc.	Piston Type	Cracking Pressure	Port Size

Highlighted represents preferred options that offer the shortest lead times. Other options may be available, but at extended lead times.

Code	Model Description
H103	5000 PSI Series

Code	Cracking Pressure
*Omit	0.3 Bar (5 PSI)
20	1.4 Bar (20 PSI)

**Not available with "A" option.*

Code	Seals
Omit	"D"-Ring

Code	Port Size / Body Material
8T	SAE-8 Steel (5000 PSI)

Code	Piston Type
P	Pilot Piston without seal
A	Pilot Piston with seal Note: Requires 1.4 Bar (20 PSI) crack minimum.

Kit	Part Number
Nitrile Seal	SK10-2
Fluorocarbon Seal	SK10-2V

CV Check Valves
SH Shuttle Valves
LM Load/Motor Controls
FC Flow Controls
PC Pressure Controls
LE Logic Elements
DC Directional Controls
SV Solenoid Valves
PV Proportional Valves
CE Coils & Electronics
BC Bodies & Cavities
TD Technical Data